

Student: _____ Age: (on May 9) _____ Teacher: _____
 Teacher giving test: _____ Date: _____ Score: _____

1. (10) Identify the following major key signatures:

2. (16) Write the number name for each of these harmonic and melodic intervals:

1. (10) Identify the following major key signatures:

2. (16) Write the number name for each of these harmonic and melodic intervals:

3. (24) Add bar lines and write in the counting for each note on the line provided:

13.

4. (20) Answer the following questions about "Cuckoo in Hiding" by Robert Schumann:

Allegro moderato M.M. ♩ : 66-80

- The tempo of this piece is _____.
- This means to play (circle one): moderately slow very fast moderately fast
- The time signature is _____.
- In measure one the curved line over the notes in the treble clef is called _____.
- The last note of measure one is to be played _____.
- The interval circled in measure one(1) is a _____.
- The interval circled in measure two(2) is a _____.
- Measure five begins with a _____.
- The sign at the end of measure 8 is a _____.
- This piece is in the key of _____.

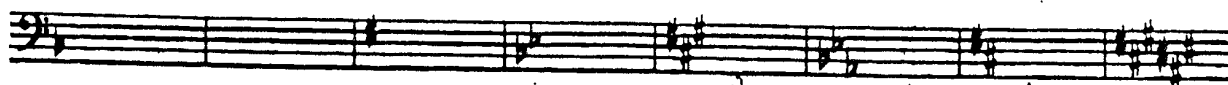
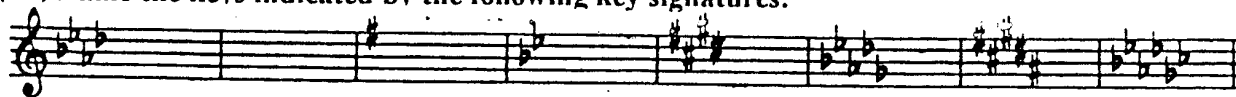
5. (20) Write the scale of the piece above on the staff below using the key signature, and

6. (10) write the chords (I, IV, V7, I) of the scale in root position in the proper spaces.

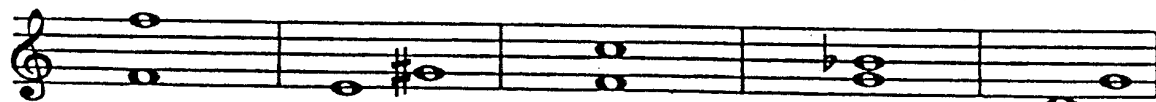
1. (7) Write the order of sharps:

2. (7) Write the order of flats:

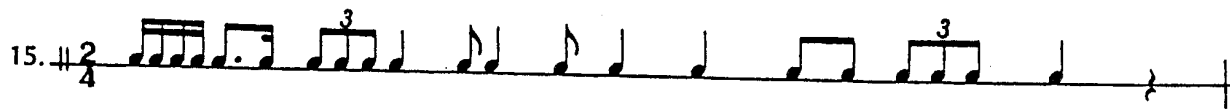
3. (16) Name the keys indicated by the following key signatures:



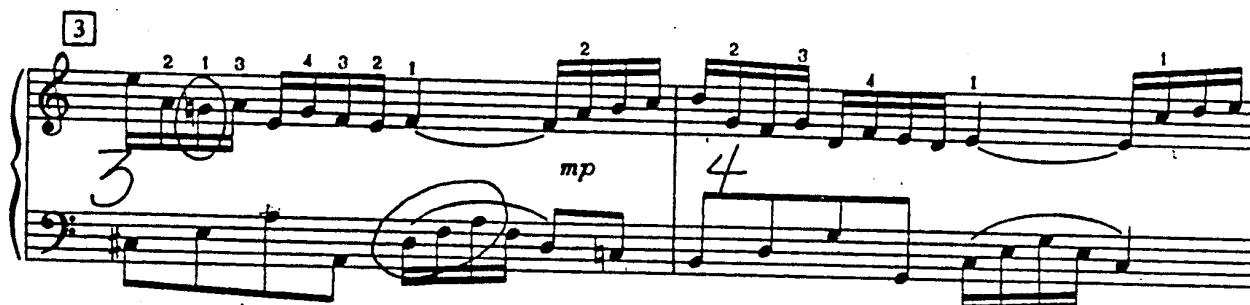
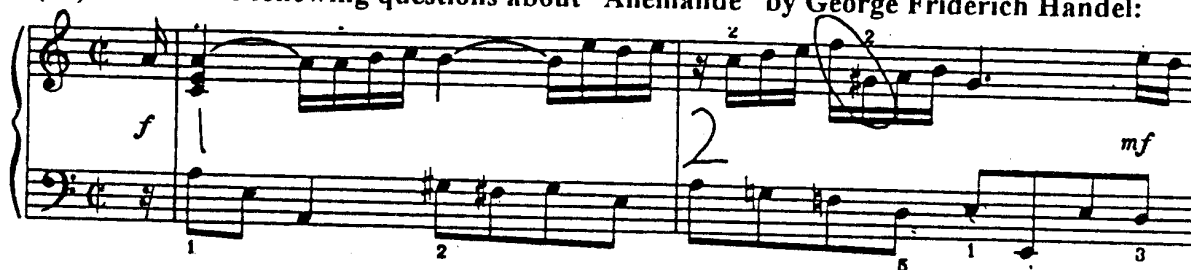
4. (10) Label these intervals and identify their quality:



5. (18) Add bar lines and write in the counting for each note on the line provided:



6. (42) Answer the following questions about "Allemande" by George Friderich Handel:



- a. This piece is written in which period? (circle one): Baroque Classical Romantic
- b. It is in the key of _____.
- c. The dominant of this key is _____.
- d. The time signature is _____ which means _____.
- e. The piece begins with an (circle one): upbeat downbeat
- f. The first chord in the treble clef is in what inversion? _____
- g. The curved line over the first beat in measure one is a _____.
- h. ~~The beginning of measure three (3) is in the key of _____.~~
- i. ~~The beginning of measure four (4) is in the key of _____.~~
- j. At measure four the melodic pattern repeated in a different scale degree is called a (Circle one): etude sequence encore
- k. The interval circled in measure two (2) is a _____.
- l. The broken chord circled in measure three (3) is a _____.
- m. The note circled in measure three is a (circle one): upper neighbor lower neighbor

look below

1. (7) Write the order of sharps:

2. (7) Write the order of flats:

3. (16) Name the Major and minor keys indicated by the following key signatures:

4. (16) Label these intervals and identify their quality:

5. (30) In the piece "Adagio" by Franz Schubert shown below, answer the following questions:

Adagio D 17

- a. The piece is written in the _____ period:
- b. The tempo marking is _____ which means _____.
- c. It is in the key of _____.
- d. The time signature is _____ which means _____.
- e. The scale passage in the bass clef of measure two (2) is (circle one):
 whole tone pentatonic chromatic
- f. The first chord in the first measure is _____.
- g. The first chord in the second measure is _____.
- h. The ornament in measure three (3) is called (circle one):
 grace note turn mordant
- i. The harmonic interval circled in measure two (2) is _____.
- j. The melodic interval circled in measure five (5) is _____.
- k. The harmonic interval in the bass clef in measure five (5) is _____.
- l. The chord in the beginning of measure ten is _____.
- m. The chord in the beginning of measure eleven is _____.

6. (16) (8) Write the scale and chords that correspond to this piece: